

GAS EQUIPMENT

**REGULATORS
MANIFOLDS
CONNECTORS
TUBING
HEATERS**

April 2012

RAINBOW CONVERSIONS

For all your motorhome needs

01945 585931

Refillable Cylinders With Level Gauge

Specially designed to fit all caravans and motorhomes. European approved with a 15 year warranty on the complete system. For complete safety, the European Pi approved filler valves automatically shut off the gas when 80% capacity is reached - preventing dangerous overfilling.

6Kg cylinders carry 11.5 litres (80%). Height: 492 x 246mm diameter. Empty cylinder weight: 6.9Kg approx.

11Kg cylinders carry 21 litres (80%). Height: 540 x 304mm diameter. Empty cylinder weight: 11.5Kg approx.

01-4006 6Kg Cylinder **£119.99**

01-4011 11Kg Cylinder **£129.99**



Filler Kits

UK Autogas Bayonet Filling Kits in white or black finish together with screws for mounting on the side of your caravan or motorhome. Connection to the cylinder (s) is with the super safe rubber-free Stainless Steel flexible hose with 3/4" UNF connections.

01-4100 White 1.5m Kit **£74.99**

01-4150 Black 1.5m Kit **£74.99**

01-4106 White 0.6m Kit **£71.99**

01-4156 Black 0.6m Kit **£71.99**



Bracket For Filling Kit

This Multi-positional bracket can be used to secure the filling point either to the floor, roof or side walls of your cylinder locker.

01-4160 Bracket **£18.99**

Connector Hose

2nd Cylinder 600mm connector hose. Turning a single cylinder system into a twin could not be easier. This 0.6m stainless steel hose with 3/4" UNF connections connects the Gaslow Cylinder 1 & Cylinder 2 together. When you go to fill up, both cylinders will be automatically filled.

01-4200 **£64.99**



Adaptors for Gaslow Fill Kit

This French/Italian Adaptor simply screws into your UK fill point.

01-4300 **£16.99**



Adaptor for Gaslow Fill Kit

This Euro Adaptor simply screws into your UK fill.

01-4310 **£11.99**



Always use a Qualified person to fit equipment.

Adaptors for Gaslow Fill Kit

This Euro/Spanish Adaptor simply screws into your UK fill point.

01-4305

£20.99



21mm Clip-on Butane Regulator

Gaslow gauge built directly onto a Butane 21mm clip-on regulator which fits the 7Kg Calor cylinder. Not for use with 15Kg Calor Cylinders.

01-1730

£24.99



Cavagna 30mbar Caravan Regulator

This caravan regulator is a superior two-stage regulator which can work with Butane and Propane gas. It has built-in over-pressure protection and switching between different gas cylinders is achieved simply by changing the high pressure hose or adding a Gaslow Adaptor on to the W20 inlet. It is manufactured to European standard 12867 which is now required for caravans and motorhomes built to EN1949.

01-1700

£19.99



8mm W20 with Test Point
10mm W20 with Test Point

01-1682

£11.99

01-1683

£11.99

Propane Refillable Adaptor Gauge

This gauge is designed to convert all existing UK Propane gas connections to fit the Gaslow Refillable cylinder.

01-4330

£19.99



Easy-Fit adaptor Uk Propane

UK POL LH Male adaptor with Easy-Fit wheel to convert 21.8 LH hoses (Butane nut) to fit UK propane gas cylinders.

01-1674

£13.99



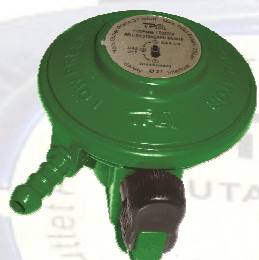
GAS FITTINGS

Regulators & Adaptors

Patio Gas Regulator

Propane, 37mbar, inlet 27mm, outlet 8mm nozzle

014058 £5.99



Butane Regulator - Suit Calor

28mbar, butane, outlet 8mm nozzle, inlet union 109

014053 £5.99



Propane 27mm Clip On Regulator

37mbar, propane, inlet 27mm, outlet 8mm nozzle

014041 £5.99



Propane Regulator - Suit Calor

37mbar, propane, inlet pol 105, outlet 8mm nozzle

014052 £5.99



Calor 21mm Clip On Regulator

28mbar, butane, inlet 21mm, outlet 8mm nozzle

014055 £5.99



Campingaz Regulator

28mbar, butane, inlet 16 x 1.5, outlet 8mm nozzle

014054 £5.99



Cavagna Euro Regulator Bulkhead

M20 inlet

G924 8mm outlet
G925 10mm outlet

£25.99



Cavagna Euro Regulator Bulkhead

M20 inlet, 8mm 90° outlet

G922 £27.99



Truma Regulator

New version with elbow inlet, 30MBAR, 1.5kg, Type EN61-DS, M20 x 1.5 (90°) x RVS10, 10mm.

0129467 £39.99

New version with elbow inlet, 0MBAR, 1.5kg, Type EN61-DS, M20 x 1.5 (90°) x RVS8, 8mm.

0129466 £39.99



Euro Regulator With Test Point

Complies with EN1949
Operates at 30mbar

014077 £29.99



Euro Regulator Adaptor

For use with M20 x M20 hose.

014075 20mm adaptor butane
014064 27mm clip on adaptor

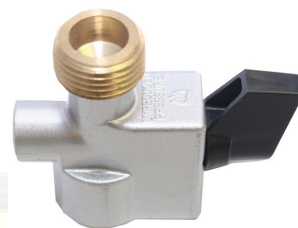
All £9.99



Euro Regulator Adaptor

21mm Butane adaptor

014074 £9.99



Euro Regulator Adaptor

For use with M20 x M20 hose

Campingaz adaptor

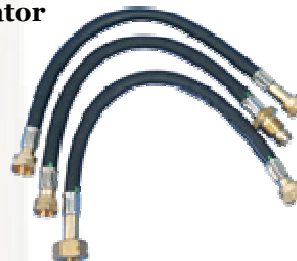
014076 £9.99



Pigtails For Euro Regulator

014073 M20-m20
353305 M20-Butane
353589 M20-Propane

All £11.99



Euro Regulator - Copper Tube

Connects a standard euro caravan regulator fitting to a copper pipe.

G830 m20 - 10mm £11.99
G829 m20 - 8mm £11.99



Gas Fitting Kit

-Tube bender for 6mm, 8mm & 10mm copper.
-Tube cutter, 3-22mm (1/8 to 7/8 OD)
- 3 Rolls of PTFE thread seal tape, 12mm x 0.075mm x 12m
1878GFK £19.99



Bullfinch Gas Outlet Point

The ideal accessory for any caravan or motorhome. Made from a high quality tough and durable injection moulded plastic. Comes complete with the adaptor ready for use.

01712089 £34.99



Truma BBQ Point

The BBQ point makes it possible to connect gas equipment such as gas BBQ's and gas lamps even outside the vehicle.

23290 White
232901 Black
£39.99



Connectors

Bulkhead nozzle 5/16"

Rubber hose to copper tubing

011620 £4.99



5/16" Nozzle

Rubber hose to copper tubing

209700 £3.99



Straight couplings

Copper to copper

9781 1/4" equal **£3.29**
9821 5/16" equal **£3.29**
9801 1/4" - 5/16" **£3.69**
G804 3/8" to 5/16" **£4.99**

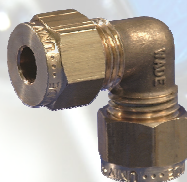


Elbows

Copper to copper

210800 5/16"
221133 1/4"

All £3.89

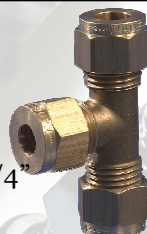


Tee Pieces

Copper to copper

011141 1/4" equal
011161 5/16" equal
50453 5/16 x 5/16 x 1/4"

All £5.99



8mm Rubber Hose Connector

32422 'T'
32424 'Y'

£2.48



Manifolds

Single gas tap

5/16" (8mm)

807820 £9.99



2-way gas manifold

5/16" (8mm)

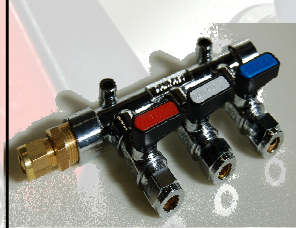
807015 £18.99



3-way gas manifold

5/16" (8mm)

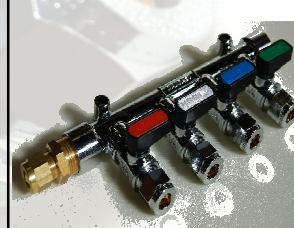
807020 £25.99



4-way gas manifold

5/16" (8mm)

807025 £35.99



Truma 2-way gas manifold

5/16" (8mm)

G931 £19.99



Truma 4-way gas manifold

5/16" (8mm)

G933 £37.99



Tubing

Gas bottle fixing strap (strap length 1160mm)

26579 £3.99

Spacer £1.59



High pressure gas hose (per mtr)

02-0854 £2.49



Copper tube (per mtr)

351615 1/4" OD **£3.99**
014620 5/16 OD **£3.99**



The **HS2000** and **HS2800** heaters are automatic thermostatically controlled blown air heating systems fuelled by propane or butane gas. Heatsource is designed for a variety of automotive and marine applications as a source of heat totally independent of the engine.

Applications

Propex Heatsource blown air systems are used in many applications throughout the world, these include Motorhomes, Caravans, Boats, Cranes, Horseboxes, Mobile Workshops etc. Both 12 and 24 volt versions are available.

Control

Both the **HS2000** and **HS2800** are supplied as standard with a solid state electronic thermostat which automatically switches the unit on and off to maintain the desired temperature. When the room temperature drops below the selected level, the Heatsource will automatically ignite and run until the cabin reaches the selected temperature. The thermostat is an easy to fit surface mount design and integrates with the new electronics fitted to the HS2000 and **HS2800** heaters. An easy to operate panel mounted digital timer/thermostat specifically designed for heatsource, is also available. Unlike some heaters, there is minimal electric current consumption during ignition so cycling the heatsource on and off does not have the effect of additional battery drain.

Efficiency

With forced air combustion and the Propex two stage stainless steel heat-exchanger, the **HS2000** and **HS2800** are a clean and highly efficient way to heat your vehicle or boat. Air for combustion is taken from outside and passed into the combustion chamber having been mixed with gas during three aeration stages, it is ignited automatically and heats up the large surface area of the heat-exchanger. The Heatsource units are totally room sealed and exhaust all products of combustion externally through the neat 22mm i.d. stainless steels flue pipe. To add to the efficiency, cabin air is normally re-circulated in preference to using cold air from outside. The HS series heaters are also very efficient on electrical current consumption, the high quality motor/fan combination and innovative current reducing electronics, both of which have been improved in the latest versions, means that even the larger **HS2800** draws less than 2 amps during normal operation.

Quiet Operation

Propex heaters are designed to be quiet in operation without compromising air throughput and heat output. There will always be some air noise from a system that produces a healthy throughput of air, however, by using high quality balanced fans and smooth enclosed motors with ball race bearings, noise is kept to a minimum. Noise is also unaffected by high voltage, a common occurrence with battery charges, solar panels etc permanently wired. The micro-processor electronics regulates the motor voltage so that the fan speed does not alter from 10 to 15 volts.

Safety

Heatsource blown air heaters conform to the latest European standards for both the appliance and the electronics and during the rigorous testing the focus is very much on safety. The heaters also have to comply with an enhanced version of the Electro Mechanical Compatibility Directive to ensure they do not interfere with other electronics and that they are immune from interference by other electronics. The intelligent electronics are continuously monitoring the operation of the heater to make sure everything is operating correctly and safely. This includes monitoring of the flame, case temperature, combustion airflow, gas solenoid valve and voltage. Should any of these stray outside of the predetermined levels, the heater will be switched off and the red light on the thermostat will indicate a fault by flashing a certain number of times.

Installation

Both the **HS2000** and **HS2800** are supplied with complete fitting kits to suit either vehicle or marine applications. In vehicles and caravans the unit is usually mounted in a bed-box or cupboard, flue downwards through the floor and out to the side of the vehicle using flexible stainless ducting. These ducts (22mm i.d. for the **HS2000** and 26mm i.d. for the **HS2800**) are supplied as standard in lengths of 750mm for vehicles and 1 metre for boats. The ends are finished with neat stainless steel end-caps which comply with EN624. The heat is ducted to one or more outlets through tough highly flexible 60mm or 76mm ducting. In the case of multi-outlet installations, the first outlet is an open outlet with directional control and the rest are closable and are used in conjunction with the appropriate sized plastic Y-branches. Marine applications feature an attractive polished stainless steel through hull fitting which accepts the stainless steel pipes for the flue outlet and the combustion air inlet. Extra ducting and stainless steel bulkhead mounting brackets are also part of the marine fitting kits.

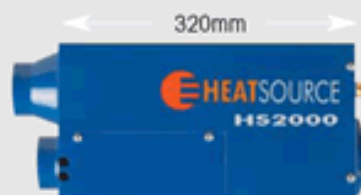
Economy

The chart below reflects the consumption of gas if the heater was running continuously. In reality, both heaters have similar very high efficiency ratings, so the overall gas consumption will be about the same because the **HS2800** will be running for a shorter period of time before the thermostat switches it off.

	HS2000	HS2800
Average consumption	142 grams/hour	225 grams/hour
3.9kg propane cylinder	27.5 hours	17.5 hours
4.5kg butane	31.7 hours	20.0 hours
13kg propane	91.5 hours	58.0 hours
15kg butane	105.6 hours	67.0 hours
19kg butane	133.8 hours	84.5 hours
47kg butane	331.0 hours	209.0 hours
904 Camping gaz (1.81kg)	12.75 hours	8.0 hours
907 Camping gaz (2.72kg)	19.0 hours	12.0 hours

HS2000

Heat Input:	2.1kW
Heat Output:	1.9kW
Voltage:	12V or 24V versions
Current Consumption:	1.4A continuous running
Air Throughput:	60 C.F.M.
Fuel:	Butane or Propane Gas



HS2800

Heat Input: 3.0kW

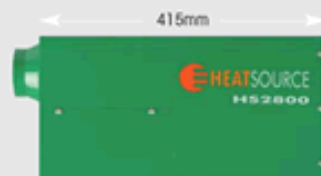
Heat Output: 2.8kW

Voltage: 12V or 24V versions

Current Consumption: 1.9A continuous running

Air Throughput: 85 C.F.M.

Fuel: Butane or Propane Gas



Propex Vehicle Kits

Propex Heatsource 2000 (2KW) Single outlet kit £429.00

Propex Heatsource 2000 (2KW) Twin outlet kit £469.00



Coilflex vehicle hot air ducting



Hot air outlets with directional control



Flexflex stainless steel flex pipe



Propex Heatsource 2800 (2.8KW) Single outlet kit £525.00

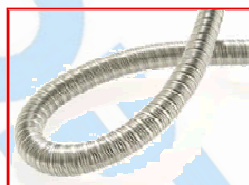
Propex Heatsource 2800 (2.8KW) Twin outlet kit £559.00



Coilflex vehicle hot air ducting



Hot air outlets with directional control



Flexflex stainless steel flex pipe



These Propex heater kits just need a gas supply and 12 volt , everything else is included in the kit.

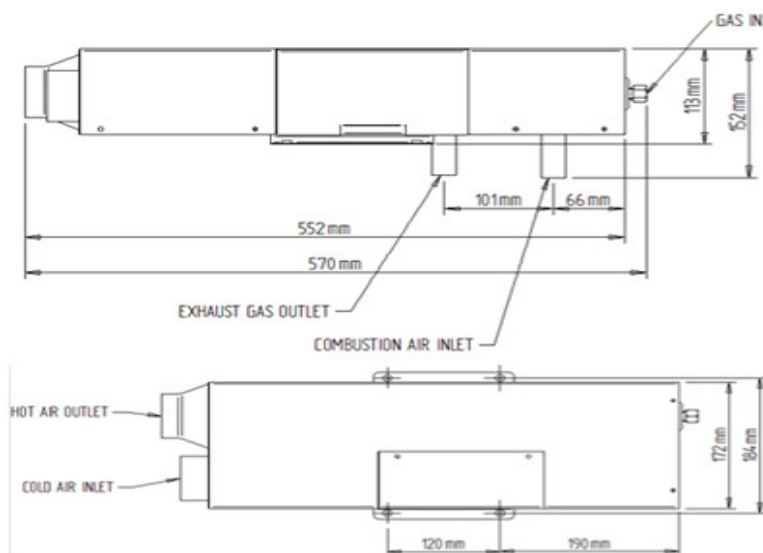
The **HS2000E** heater is an automatic thermostatically controlled blown air heating system fuelled by propane/ butane gas or 230V mains electric.



Propex Heatsource 2000E (2Kw) Single outlet kit
£629.99

Propex Heatsource 2000E (2Kw) Twin outlet kit
£659.99

Propex Heatsource 2000E (2Kw) Triple outlet kit
£689.99



Ceramic vehicle hot air ducting



Hot air outlets with directional control



Flexible stainless steel flue pipe

24v applications available: Please contact us for further information.

Trumatic E2400

The Trumatic E 2400 is both compact and flexible. This unit is discrete and requires very little space to be fitted but at the same time gives you 2,400 W of heating power. This heater can be installed in practically any position and is 100% automatically operated thanks to the electronic control unit (included). All this taken into consideration makes the E 2400 a perfect, reliable and safe heater for small camper vans. Included with this heater is a thermostat, control panel, 4m cable and a mounting kit; variants with a 10m cable.

Key Features include: Maintenance free operation, Low electricity consumption, Flexible installation positions, Ideal as auxiliary heater, Electronic control unit, Also available for use with natural gas.

Part Number and Technical data: 37111-01 – Trumatic E 2400, 30 mbar, 12V

Rated Thermal output	2400 W
Air flow rate	49 / 78 m ³ /h
Gas consumption	Partial load 100 g/h
	Full load 200 g/h
Current input	0.6/ 1.1A
Rest current	0.01 A
Weight	4.7KG
Product Id. Number	CE0085AO0008

Trumatic E2400 (heater only) **£679.99**
Wall flue **£59.99**
Ducting **£12.99 mtr**
Outlets **£12.99**



Blown air Webasto diesel fired Airtop 2000S

Webasto Airtop 2000S air heater - c/w rotary controller, suitable for Motorhome conversions only. Uses vehicles own fuel system via a contained burner / heat exchanger. An air fan blows ducted air into the area requiring heat. The system can provide boost heating to the cabin area or supply warm air into a living / sleeping quarters via a ducted system. The universal heater kit contains everything required for installation except ducting pipe work which is available in either 1 or 2 outlet packages. 12/24v, dimensions 317 x 120 x 121mm

Webasto
Feel the drive



070200

£999.99

Truma Convection Heaters

Perfect for use in caravans, the S3002 Heater range is fitted to virtually all caravans. Predominantly a very highly efficient but low gas consuming fire, the S3002 is today commonly used with an Ultraheat electrical element as so many campsites now come with electrical hook up. To best suit your caravan, the S3002 has a variety of different front cases to choose from and its modern curved design contributes to the homely feel of your pride and joy. Technical Data: Rated thermal output: 3400 W, Gas consumption: 30 - 280 g/h, Weight: 9.8 KGS



3002 Auto	£274.99
S3002 Piezo	£249.99
Front case (Brown or Grey)	£68.99
Flu kit 2.5M	£51.99
Flu kit 3.0M	£65.99
TEB2 fan	£118.99

truma
(UK) LIMITED

Heater Ancillaries

Whale Ducting Straight Piece

Connects to Whale or Propex ducting (can also be used with whale outlets)

Overall Size: 59mm
Outer diameter: 84mm
Part no. DX6502



516502 £5.99

Whale Ducting 'T' Piece

Connects to Whale or Propex ducting (can also be used with whale outlets)

Overall Size: 110 x 133mm
Outer diameter: 84mm
Part no. DX6503



516503 £7.99

Whale Ducting 'Y' Piece

Connects to Whale or Propex ducting (can also be used with whale outlets)

Overall Size: 155 x 127mm
Outer diameter: 84mm
Part no. DX6504



516504 £8.99

Whale Ducting End Cap

To suit Whale straight, 'T' or 'Y' piece

Part no. DX6501

516501 £3.99



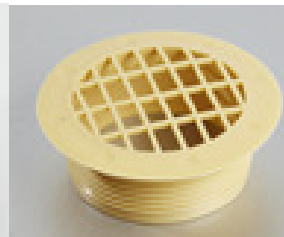
Whale Outlets

Connect to standard Whale or Propex hose and can also be used with hose that has a 65mm inner diameter.

To connect your hose, you may also require a straight connector, 'T' or 'Y' piece (see above).

Overall Size: 85mm
Recess depth: 30mm

Fixed White	516526	£6.99
Fixed Black	516536	£6.99
Fixed Beige	516516	£6.99
Open/Close White	516521	£8.99
Open/Close Black	516531	£8.99
Open/Close Beige	516511	£8.99



Propex Outlets

Size 101 x 101mm.



FV28B Fixed Black (for HS2800)	£9.99
FV20B Fixed Black (for HS2000)	£10.99
FV28S Fixed Beige (for HS2800)	£9.99
FV20S Fixed Beige (for HS2000)	£10.99
OC28B Open/Close Black (for HS2800)	£11.99
OC20B Open/Close Black (for HS2000)	£11.99
YB80 'Y' Branch for 80mm ducting	£9.99
YB60 'Y' Branch for 60mm ducting	£13.99
R8060 80 - 60mm reducer	£1.79



60mm Ducting

For use with Propex or Truma heaters

40230-01

£9.99 per metre



80mm Ducting

For use with Propex or Truma heaters

40230-02

£14.99 per metre



Truma Outlets

Outlet A available in black, beige or white.

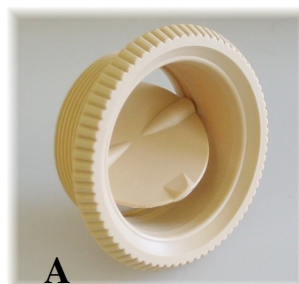
TOB60 Outlet A Black **£5.99**

TOS60 Outlet A Beige **£5.99**

TOW60 Outlet A White **£5.99**

TOG60 Outlet B Grey **£6.99**

TOBN Outlet Backnut **£1.99**



Truma 'T' Piece

105 x 80mm, threaded for outlet.

TTP60 **£6.99**



Truma Ducting clip

Can be used with Propex. Colour may vary

TDC60 **£1.79**



Catalytic heaters

Minicat Portable Gas Heater

- Flueless catalytic heater
- Output up to 3400 BTU 1Kw
- Adjustable output
- Freestanding or wall mounted
- Flame failure safety device
- Height 34cm, Width 23cm, Depth 8cm
- Regulator & Hose optional extra

350852 £159.99



Midicat Portable Gas Heater

- Flueless catalytic heater
- Output up to 6000 BTU 1.7Kw
- Adjustable output
- Freestanding or wall mounted
- Flame failure safety device
- Height 42cm, Width 32cm, Depth 8cm
- Regulator & Hose optional extra

351936 £174.99



Sunny heater 1kw Butane / Propane

- Flueless heater
- Flame failure device
- Feet for stability
- Height 20cm x W 37cm x D 7.5cm
- Regulator & Hose optional

034810 £87.99



Royal Classic Calor Gas Portable Cabinet Heater

A Matt black LPG radiant mobile gas cabinet heater for the home or office.

Royal Classic heater, LPG radiant mobile heater, 3 Heat settings 1.5Kw Min—4.2 Kw Max, piezo ignition, oxygen depletion system, flame failure device, anti tilt switch, castors for easy movement. Fitted with 21mm Clip on Butane regulator. Accepts 7 or 15Kg Butane bottle. Size: 72 x 42 x 36cm.

359679

£89.99



Royal Uheat Gas Portable Cabinet Heater (no regulator)



These Royal Leisure Uheat indoor heaters use radiant energy technology to bring warmth to your house. Heating by radiant energy is observed everyday, the warmth of the sunshine being probably the most commonly observed example.

Unlike other types of radiant heating systems, radiant panels have very low heat capacity and have the quickest response time of any heating technology. Because the panels can be individually controlled for each room, the quick response feature can potentially result in cost and energy savings compared to other systems when rooms are infrequently occupied: when entering a room, the occupant can increase the temperature setting and reach a comfortable level within minutes. The benefits of LPG Radiant Heating:

- Heat coverage even at low level
- Easily controlled by thermostat or time switches
- Low running costs
- Instant heat at the touch of a button
- Minimal air movement means less dust and pollution
- Easy to manage and maintain
- Can be used for overall heating or directional spot heating
- Space-saving - radiant heaters are usually mounted overhead
- Cleaner burning
- better for both the immediate working area and the wider environment
- Three heat setting
- Electronic ignition
- Large hinged rear door
- Large rear wheels and castors for better mobility
- Flame failure device
- Dimensions: 71 x 42 x 42cm

353652

£94.99

Terms & Conditions of Trading/Ordering

1. Where cheques are accepted (deposits for building only), Please make all cheques payable to Rainbow Conversions Ltd
2. For all orders that involve building and /or fitting, a 30% deposit is required before work commences
3. All orders for parts or accessories must be paid for in full, prior to goods being dispatched or upon collection
4. All "special orders" must be paid for in full prior to goods being ordered from our suppliers. "Special" means goods not normally stocked or supplied by Rainbow Conversions Ltd.
5. All mail order goods are subject to our post and packaging charges.
6. All goods returned are subject to a 15% handling charge.
7. All goods remain the property of Rainbow Conversions Ltd until paid for in full.
8. All goods are subject to availability of stock.
9. All prices shown include VAT @20% unless otherwise stated.
10. Although we always attempt to meet quoted deadlines, we are unable to guarantee delivery/collection dates due to operational constraints.
11. Any building and/or fitting orders which are cancelled by the customer after work has commenced, but has not been completed will result in the automatic loss of the 30% deposit. Any costs incurred to Rainbow Conversions Ltd above the 30% deposit must also be paid. Any order which is cancelled before work has commenced a refund may be given at our discretion. Excluding any special order parts.
11. Every effort has been taken to ensure the accuracy of the contents of our brochure. However, the company cannot be held responsible for any errors that may occur.
12. Due to a constant effort to improve our range of products and our prices, we reserve the right to alter specifications and prices without notice.
13. Upon placing an order, you are agreeing to these terms and conditions.
14. All Mail Order parcels must be checked for damages before signing for them. If Damage occurs please mark 'DAMAGED' on the carriers consignment note before accepting the goods.
15. Failure to do this voids insurance claims against the carriers and we (Rainbow conversions ltd) will not be held responsible for damage to goods whilst in transit.
16. All damage, shortages or omissions must be reported to us within 3 working days.
17. E&O.E.
18. These terms and conditions and details in our brochure are subject to change without prior notice.
19. These terms and conditions do not affect your statutory rights.

How to find us

There is a link to a map on our website
www.rainbowconversions.co.uk

Rainbow Conversions Ltd

Unit 1, Algores Way
WISBECH
Cambs. PE13 2TQ

Tel : 01945 585931

