

# Ventilation

ROOFLIGHTS / VENTS

AIR CONDITIONING

September 2013

RAINBOW CONVERSIONS

For all your motorhome needs

01945 585931



**Heki 1 Variable ventilation for every situation**

The Heki 1 is opened with a manual winding system. The lift/tilt rooflight guarantees more light, better ventilation and a great spacious feeling inside your motorhome. The glazing panel can be raised all round to a maximum of 40 mm, or directional to one or all sides, allowing you to adjust ventilation to every outside situation.

Acrylic double glazing and polyurethane frame for high insulation. Large overlap of the glazing panel stops water entering the vehicle so the dome can be raised when raining.

- With blind and fly net mounted to the inner frame, seamlessly adjustable
- Clear opening of 790 x 510 mm.
- Installation requires a flat surface area of 1.100 x 820 mm
- Can be installed along or across to the vehicle roof
- Suitable for roof thickness from 27 - 60 mm by cutting the inner frame

**Technical Data**

- Weight: 22Kg
- Cutout: 960 x 655mm
- Installation Area: 1100 x 820mm
- Possible roof thickness: 27-60mm
- Max. Opening angle: 70°

**9104100112**

**£1029.99**



**Heki 2 Easy to handle with pneumatic stays**

The Heki 2 rooflight made from robust and weather-proof ASA has been developed specially for caravans. The large opening allows plenty of light and optimal ventilation.

The double glazed acrylic panel is easily opened with the metal bar handle as the pane is held open by the pneumatic stays for your comfort. Locked in the bad weather setting, rain cannot penetrate into the caravan and wind cannot lift the panel in secured position.

- The large opening of approx. 780 x 530 mm allows plenty of Light and also optimal ventilation
- Easy installation along or across the vehicle roof
- Installation requires a flat surface area of 1080 x 780 mm
- Roller flynet and blind are mounted to the inner frame which Can be adjusted independently or combined
- Suitable for roof thickness from 25-60 mm in combination with special fittings. (supplied with kit for roof thickness 25-33mm)
- Frame colour: cream white (RAL 9001)

**Technical Data**

- Weight: 11Kg
- Cutout: 960 x 655mm
- Installation Area: 1080 x 780mm
- Possible roof thickness: 25-60mm
- Max. Opening angle: 55°

**9104100235**

**£379.99**



### Heki 2 Deluxe **The exclusive rooflight for caravans**

The highly successful Heki 2 has been improved even further. Four integrated lights create a comfortable atmosphere and the innovative Duette honeycomb material offers the greatest possible thermal insulation due to the hollow chamber construction. Blind and fly net mounted to the inner frame, can be operated together or independently, by means of two fixing bars.



- Inner aluminium lining which absorbs up to 99% of harmful UV rays
- Four integrated 5 W bulbs for soft, subdued lighting
- Precision produced with Duette honeycomb material
- New fixing bars specially developed to match the colours of the inner frame
- Suitable for roof thickness from 25 - 60 mm. (supplied with kit for roof thickness 25- 33mm)
- Frame colour: cream white (RAL 9001)

#### Technical Data

- Weight: 11Kg
- Cutout: 960 x 655mm
- Installation Area: 1080 x 790mm
- Possible roof thickness: 25-60mm
- Max. Opening angle: 55°



**9104100240**

**£464.99**

### Heki 3 plus **Improved shading with pleated flynet**

To improve the shading of your vehicle this rooflight is equipped with a pleated fly net. The Duette honeycomb system lets you enjoy excellent thermal insulation and comfort.



- Flynet and blind are seamlessly adjustable
- Easy operation with convenient winding mechanism
- Two built-in convenience lights add a soft, subdued illumination
- Patented lateral straps reduce incidence of light
- Frame made of weather-proof ASA with a robust locking system
- The large panel overlap prevents incidence of water
- Suitable for roof thickness from 27- 60 mm. (supplied with kit for roof thickness 27 –33mm)



#### Technical Data

- Weight: 15Kg
- Cutout: 960 x 655mm
- Installation Area: 1080 x 790mm
- Possible roof thickness: 27-60mm
- Max. Opening angle: 70°

**9104100292**

**£699.99**



**Heki 4 Plus With rain sensor and pleated flynet**

This advanced model is equipped with a pleated fly net for better shading. The dome closes automatically when it rains and the remote control allows easy control.

- Seamlessly adjustable flynet and blind
- Duette Honeycomb System ensures excellent thermal insulation
- Built-in energy-saving lights add a subtle illumination
- Frame made of weather-proof ASA with a robust locking system
- Patented lateral straps reduce incidence of light
- Suitable for roof thickness from 25 - 60 mm. (supplied with kit for roof thickness 25- 33mm)

**Technical Data**

- Weight: 15.5Kg
- Cutout: 960 x 655mm
- Installation Area: 1080 x 790mm
- Possible roof thickness: 25-60mm
- Max. Opening angle: 70°

**9104100294**

**£874.99**



**Assembly Kits for Heki Models 2-4**

- 9104100245 32-39**
- 9104100246 39-46**
- 9104100247 46-53**
- 9104100248 53-60**

**All £14.99**





## Midi Heki **Big style ventilation comfort**

With the same comfort features and exceptional quality as the Mini-Heki but with bigger dimensions for installation: 700 x 500 mm. Ideal for owners of vehicles where Heki standard model.

Version with operating bar opens in three positions: completely open, half open and bad weather position. With the glass overlapping on the sides no water can splash inside when the dome is in bad weather position. The handy operating lever allows easy adjustment of the glass dome: the dome is automatically locked when closed.

- Double-glazed, aerodynamically shaped glass dome made of acrylic pane and tinted light grey
- The frame is made of durable, weatherproof ASA
- Suitable for roof thickness from 25– 60 mm. (supplied with kit 30 –34mm)
- Inner and outer pane glued together to guarantee easy cleaning
- Die-cast finish prevents unwanted incidence of light through the frame
- Available with or without compulsory ventilation
- Frame colour: cream white (RAL 9001)

### Technical Data

- Weight: 8Kg
- Cutout: 700 x 500mm
- Installation Area: 880 x 650mm
- Possible roof thickness: 25-60mm
- Max. Opening angle: 45°

- |                   |  |                |
|-------------------|--|----------------|
| <b>9104100254</b> | <b>Without ventilation (lever opening)</b>     | <b>£282.99</b> |
| <b>9104100253</b> | <b>With forced ventilation (lever opening)</b> | <b>£282.99</b> |
| <b>9104100258</b> | <b>Without forced ventilation (electric)</b>   | <b>£459.99</b> |



## Midi Heki Style **Slim rooflight for motorhomes and caravans**

A new slim rooflight perfect for lengthwise installation thanks to its size of 400 x 700mm. Easy to use with crank (embedded into internal frame)

The internal designer frame is equipped with black-out blind and fly-screen (separately and continuously adjustable)

- More light for slim dimensioned interiors
- Continuously variable positions
- Slim roof opening available with or without forced ventilation
- Suitable for roof thickness from 25-60mm (supplied with kit for roof thickness 30-34mm)
- Frame colour: cream white (RAL 9001)

### Technical Data

- Weight: 7.2Kg
- Cutout: 700 x 400mm
- Installation Area: 815 x 540mm
- Possible roof thickness: 25-60mm
- Max. Opening angle: 25°

- |                   |                                   |                |
|-------------------|-----------------------------------|----------------|
| <b>9104106891</b> | <b>With forced ventilation</b>    | <b>£419.99</b> |
| <b>9104107365</b> | <b>Without forced ventilation</b> | <b>£429.99</b> |



### Assembly Kits for Midi Heki

- |                   |              |                   |
|-------------------|--------------|-------------------|
| <b>9104100261</b> | <b>25-29</b> |                   |
| <b>9104100263</b> | <b>35-42</b> |                   |
| <b>9104100264</b> | <b>43-52</b> |                   |
| <b>9104100265</b> | <b>53-60</b> | <b>All £14.99</b> |

### Mini Heki Plus **Small but smart**

Small and smart rooflight specially designed for installation in standard-sized dome lights (400 x 400mm). The mini Heki Plus ensures a maximum incidence of light. Easy adjustment with operating lever. Opens in three positions: completely open, half open and bad weather position. No water can splash inside when the glass dome is in bad weather position. Available with or without forced ventilation.

#### Technical Data

- Weight: 3.3Kg
- Cutout: 400 x 400mm
- Installation Area: 550 x 510mm
- Possible roof thickness: 25-60mm
- Max. Opening angle: 50°

**9104100249** Without forced ventilation (roof thickness 25-42mm)

**9104100250** Without forced ventilation (roof thickness 43-60mm)

**9104100251** With forced ventilation (roof thickness 25-42mm)

**Without forced ventilation £87.99**

**With forced ventilation £85.99**



### Mini Heki S **The solution for smaller vehicles**

The Mini Heki S with fixed ventilation is suited for standard cut-outs (400 x 400 mm). Equipped with blind and flynet it allows adjusting natural lighting and shading as required. Using the solid handles the little roof-light can be easily opened and placed into one of the five opening positions up to a height of approx. 80 mm.

- Inner frame with blind and flynet
- Easy to operate with handles
- Five opening positions
- With fixed ventilation
- Maximum opening position: approx. 80 mm

#### Technical Data

- Weight: 2.9Kg
- Cutout: 400 x 400mm
- Installation Area: 500 x 500mm
- Possible roof thickness: 23-60mm

**9104100289** (roof thickness 25-42mm)

**9104100290** (roof thickness 43-60mm)

**£64.99**



### Mini Heki Airquad

No matter which way the wind blows – Dometic SEITZ AirQuad ensures that fresh air finds its way into the vehicle. Its secret is a novel flow control element integrated in the acrylic dome. The Dometic SEITZ innovation offers an effective alternative to hinged opening rooflights – it makes optimum use of the air flow. Moreover, unlike ventilators and air conditioners, AirQuad works totally noiseless without electricity and requires virtually no maintenance.

- Inner frame with blind and flynet, seamlessly adjustable
- Easy operation with handles
- 5 opening positions (front, back, left, right or upwards)
- Maximum opening height: 80 mm
- Without Fixed ventilation
- Double-glazed acrylic dome
- Fits standard 400mm x 400mm roof cut-outs

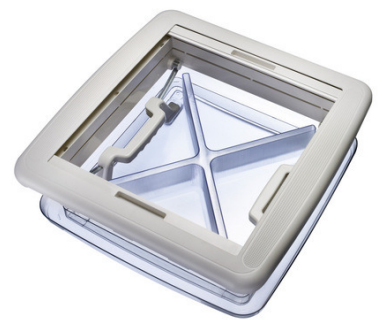


#### Technical Data

- Weight: 3.4Kg
- Cutout: 400 x 400mm
- Installation Area: 500 x 500mm
- Possible roof thickness: 23-60mm

9104106414 (roof thickness 25-42mm)  
 9104106415 (roof thickness 43-60mm)

**£108.99**



### Remis Remitop Rooflight

- Tilt and slide clear dome to allow ventilation or slides open to allow lots of fresh air
- Cutout required: 900 x 600
- Multifunctional rooflight window with pleated blind for caravan and motorhome
- Strong aluminium frame construction, built in flyscreen and effective pleated blackout blind
- Colour: Grey/blue
- Can be fitted onto a roof thickness of 28-50mm
- Ideal for self builders or replacement of existing worn or broken roof vent.

**160304 Complete standard £429.99**  
**160305 Complete with lights £459.99**





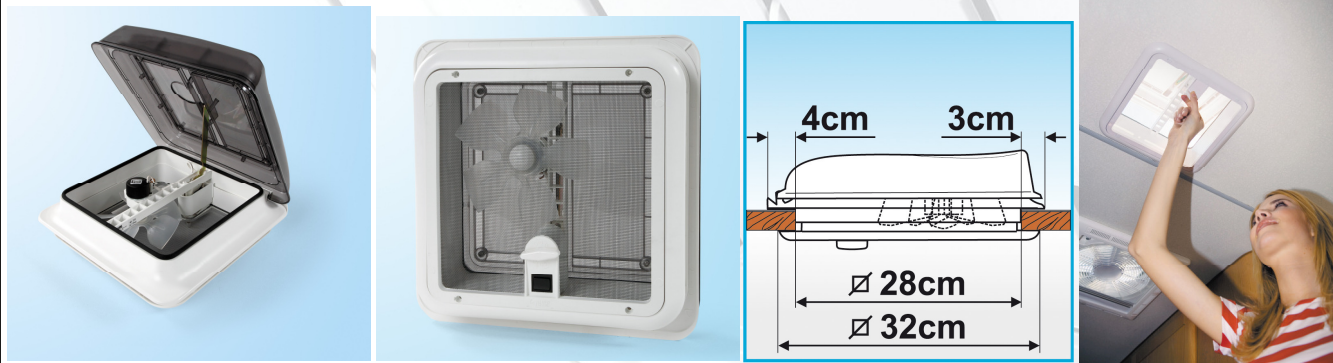
## Fiamma Turbo vent 28 **Fresh air for you motorhome's bathroom or kitchen**

Rooflight 280 x 280mm, with fan, is ideal for airing small places. Made with superior quality impact and UV-resistant materials.

Supplied with permanent air flow ventilation system and mosquito screen.

Feeding tension: 12v, Absorbed power: 25W, Max electric input: 1.9 Amp., Max air flow: 9 m<sup>3</sup>/min., Fan diameter: 180mm, Permanent air flow 50cm<sup>2</sup>.

036505 white £82.99  
036515 Crystal £93.99



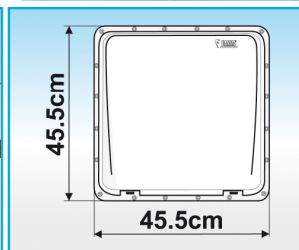
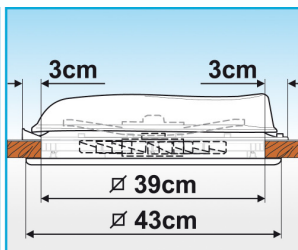
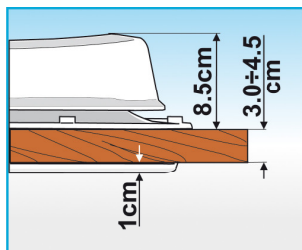
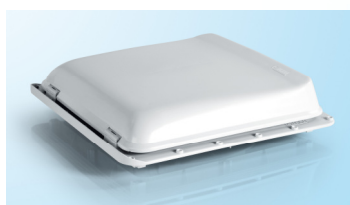
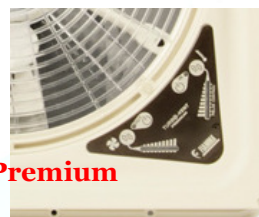
## Fiamma Turbo vent 400 **With Thermostat included**

The only one that allows you to save up to 50% electricity thanks to a new electronic circuit.

Turbo-Vent is silent at high speed and exceptionally silent at the minimum. Without the old resistance systems, which create a lot of heat and consume a lot of energy.

The Turbo-Vent is a ventilation system made from high quality materials, that are shock and UV-ray-resistant. It changes and refreshes the air inside your vehicle within seconds thanks to the 12V DC variable speed motor with 10 blades. It is the only one of its kind with an innovative electronic circuit that allows a rapid, problem-free, change of rotation. The cover can be opened and closed manually and the central arm provides stability against strong wind even when travelling with the cover open. Supplied with double external mosquito screen to collect leaves and other debris. The transparent grating permits maximum air circulation and filtering of light. Can be installed on roofs with depths of 3cm to 8.5cm using the optional extension kit. Colours: outside frame white, inside frame ivory, cover white or crystal. Feeding tension: 12v, Absorbed power: 36W, Min. electric input: 0.3 Amp, Max electric input: 3 Amp., Max air flow: 35 m<sup>3</sup>/min., Fan diameter: 300mm, Permanent air flow 80cm<sup>2</sup>.

Turbo vent	Crystal	101091	£164.99
Turbo vent	White	101092	£154.99
Turbo vent premium (LED touch button)	Crystal	27116	£189.99
Turbo vent premium (LED touch button)	White	27115	£179.99



## Fiamma vent 50

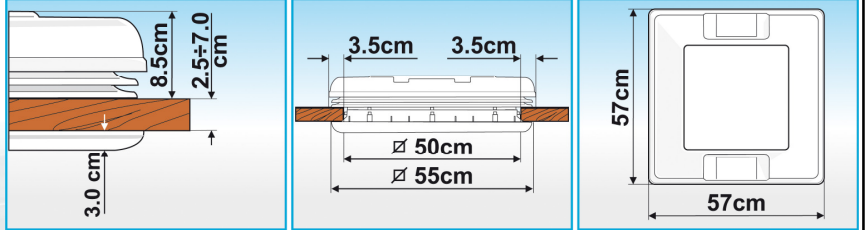
Wide pantograph rooflight that opens on all four sides with practical handles. Maintains constant vehicle ventilation and is now fitted with a standard roller blind with two rollers, one dark and one with mosquito screen. Assures permanent ventilation. Locking anti-theft device on the handles. Rainproof and windproof. TÜV and ABE approved, and made with high quality UV ray-resistant materials.

Colours: outside frame white, inside frame ivory, cover white or crystal.

Turbo-Kit can be easily installed as optional.



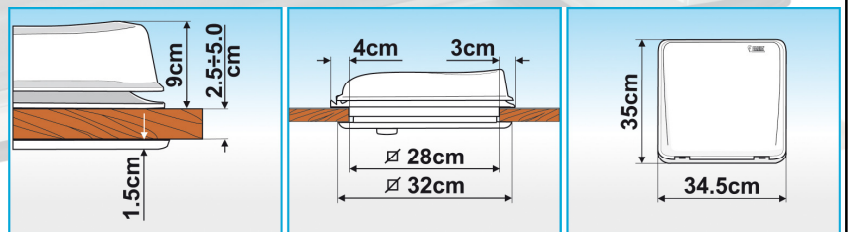
**038908 crystal (grey tint) £102.99**  
**038600 white £75.99**



## Fiamma Vent 280 **Ideal for small spaces**

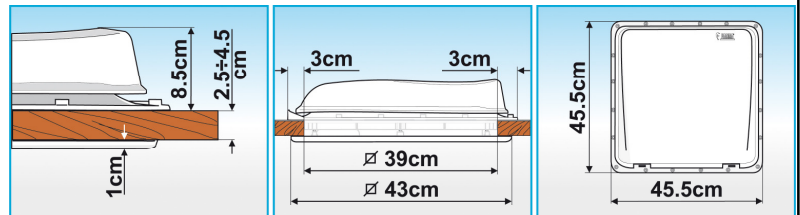
28x28cm rooflight, without fan, ideal for airing small spaces. Made with superior quality impact and UV-resistant materials. Due to an internal installation system, it is not necessary to drill holes in the vehicle. Supplied with permanent air flow ventilation system and mosquito screen. The external aerodynamic cover guarantees a watertight system. For installation on roof with depths of max 8.5cm, the optional extension kit (Fiamma no. 98683-112) can be used.

**036500 white £42.99**  
**036511 Crystal £51.99**



## Fiamma Vent 400 **Maximum stability with centre support adjusting arm**

Aerodynamic, thanks to its elegant external profile top. During high-speed testing noise and vibrations were greatly reduced. Thanks to the new outside cover and exclusive patented rubber seal, a watertight system guarantees rain streams down without the possibility of it coming in. Made with high quality UV-ray resistant materials. Maximum stability with centre support adjusting arm. Can be installed on roofs with depths of 2.5cm to max 5cm. For installation on roof with depths of max 8.5 cm, the optional extension kit (Fiamma no. 98683-112) can be used. The Vent White does not need the roller blind. The optional Rollo Vent 40x40 (page 5) can be fitted to the vent Crystal. Supplied with permanent air flow ventilation and mosquito net. Colours: outside frame white, inside frame ivory, cover white or crystal.



**038999 White £40.99**  
**036511 Crystal £53.99**



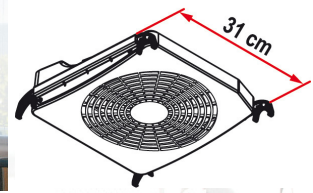
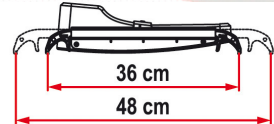
# TURBO-KIT

You can finally install the fan on large rooflights

Kit to convert the roof-light into fan. Turbo kit 12 Vdc with telescopic and patented hanging system allows the installation on all roof-lights from 40x40cm to 50x70cm when the vehicle is stationary and the rooflight is open. Composed of a ventilation system with a 24 cm diameter fan and 2 telescopic hangers adjustable from 36 to 48cm. Complete with a supply cable for lighter and a 12Vdc power supply cable for the motorhome's electric installation, that allows the rooflight to function as fan and aspirator, thanks to the manual system of supply polarity's reverse. Preset to work with batteries (8 batteries of 1,5 V D, not supplied) Usable also as table or hanging-fan. Colour ivory.

Feeding tension: 12v, Absorbed power: 3W, Minimum electric input: 0.22 Amp, Max electric input: 0.26 Amp., Max air flow: 5.4 m<sup>3</sup>/min., Fan diameter: 240mm. This fan will fit Fiamma Vent 50, Omni-Vent, RemiTop 400, Seitz Mini Heki, Seitz Midi Heki or can stand alone.

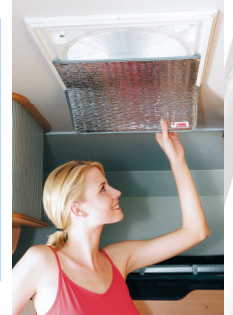
**038666 £49.99**



## Thermo-Vent 40

Insulated vent shield. Keeps your RV warmer in the winter! Suitable for all rooflights 40x40. The aluminium surfaces assist by reflecting sunlight and by reducing heatloss. Dimensions: 40x40cm. Thickness: 6mm

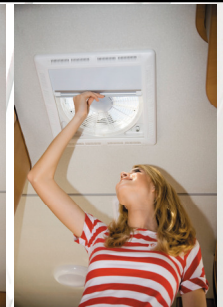
**037004 £8.99**



## Rollo Vent 40 x 40

Elegant roller blind system perfect for installing on Fiamma Vent 40x40 rooflights. Permanent air flow ventilation thanks to side grills. Low profile frame. Colour: ivory.

**038881 £22.99**  
**039992 With LED lights £66.99**



## Spoiler 40 x 40

This special spoiler assists by channelling the air smoothly around your existing rooflight and thereby reducing both wind resistance and noise levels. It is made of UV-ray resistant ABS plastic. It is easily installed with the roof vent screws or can be attached with suitable adhesives (Sika). Designed to fit most sizes of rooflights using the spacers included.

**037005 £10.99**



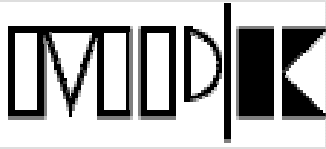
## Spoiler Universal

Universal aerodynamic roof spoiler, ideal for reducing vibrations and rooflight noise while travelling. Made with UV-ray resistant sturdy PVC material. It can be shortened to adapt itself to the different rooflights with dimensions from 110cm to 28cm. Easy to install without tools and drilling to the roof. Dimensions: 110 x 20 x 12cm.

**037009 £19.99**



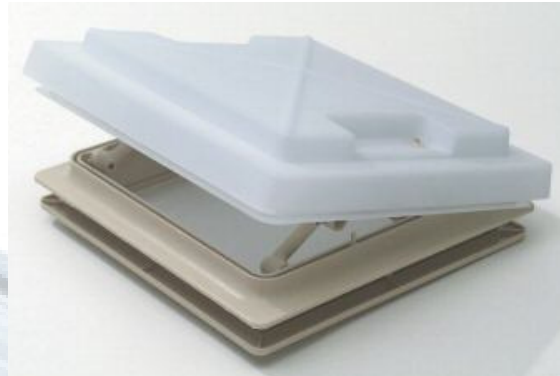




### MPK Rooflights

Strong double skin opaque dome with telescopic locking handles, 5-way opening, double skins provide free airflow with the dome closed, complete with removable flyscreen. Colour: White/Pale cream frame.

MPK 280 x 280mm	037025	£26.99
MPK 360 x 320mm	037030	£33.99
MPK 400 x 400mm	037035	£36.99

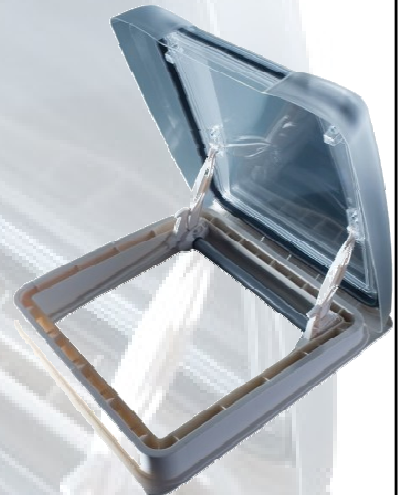


### MPK Vision Star M Pro

The vision star pro is the newest in the MPK range. Easy one hand operation and an opening upto a maximum angle of 70 degrees. The vision star pro has a fully insulated frame, leading to reduced heat loss and reduced noise.

- Clear dome rooflight with modern design
- Low profile double glazed dome (only 80mm above roof)
- Can be raised and set at different angles with geared mechanism (upto 70 degrees)
- Interior frame with pleated blind and flynet
- Very easy to use
- Aperture 400 x 400mm
- For roof thickness of between 25-60mm
- Size of inner frame: 565 x 530 x 35mm
- Without ventilation

**04801 £89.99**



### Electrolux GY20 vent



With no motor & no moving parts, this ventilator works completely silent. Airflow 10 (m<sup>3</sup>/h), dimension roof opening 130mm, dimensions 200 x 64mm

**037100 £19.99**



## Fresh Jet 1100 Compact Roof Air Conditioner

The FreshJet 1100 is the most light weight and ultra-compact roof air conditioner in Europe for keeping cool on the move. Ideal for caravans due to its significant weight saving, campervans and motorhomes. The outside dimensions make it the smallest motorhome air conditioner available in the market. It replaces the Dometic B1100S and CA1000. Energy-saving and pleasantly quiet. Its compact footprint leaves room on the roof for the satellite dish or roof box and is easy to install. It has a low start-up current of 3 amps, which ensures hassle-free operation even on campsites with low electrical circuit protection. It features new style air diffuser with front, side & rear air distribution, a digital remote control unit for on/off, fan speed, temperature settings, & LED lighting. Owners of motorhomes more than 5 metres long can use two units to create separate climate zones inside the vehicle.

The Freshjet can easily be retro fitted in replacement of your existing 400 x 400 roof vent (subject to the roof vent location, & roof space for the AC unit), alternatively it can be retro fitted with 400 x 400 roof cut out.

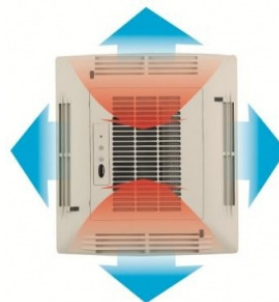
Remote Control Functions: Night-time control, timer, temperature pre-setting (+16°C to +31°C), automatic mode, cooling, lighting on/off. Ideal for motorhomes, the unit can also be operated efficiently on the move with the option of a DC Kit 1 or 3 (12 volts DC)

- Compact lightweight design
- Circuit protection for campsites: 3 A delay fuse
- Energy-saving and pleasantly quiet
- All functions can be controlled by remote control
- Integrated LED lights
- Air distribution with four adjustable air vents
- Perfect installation results
- Designed for vehicles lengths of up to 5 m
- As a duo unit, ideal for creating separate climate zones in larger vehicles



### Technical Data

Cooling capacity (kW)	1
Capacity (BTU/h)	3400
Power (V/Hz)	230 / 50
Dimensions (L x W x H) (mm)	787 x 562 x 225
Dimensions (roof opening) (mm)	400 x 400
Dimensions (inside box) (mm)	535 x 480 x 47
Weight (kg)	22
Consumption, cooling mode (W)	430



**9102900213    £999.99**

## Fresh Jet 1700 Ultra Compact Roof Air Conditioner

**New** – The FreshJet 1700 is the most light weight and ultra-compact roof air conditioner in Europe for keeping cool on the move. Ideal for caravans due to its significant weight saving, campervans and motorhomes. The outside dimensions make it the smallest motorhome air conditioner available in the market.

Energy-saving and pleasantly quiet. Its compact footprint leaves room on the roof for the satellite dish or roof box and is easy to install. It has a low start-up current which ensures hassle-free operation even on campsites with low electrical circuit protection. It features new style air diffuser with front, side & rear air distribution, a digital remote control unit for on/off, fan speed, temperature settings, & LED lighting.

The roof air conditioner supplies the interior with cool dehumidified air without dust and dirt. Four dimmable LED lamps integrated in the air outlet unit provide pleasant lighting. The roof air conditioner has an additional heating function. Owners of motorhomes more than 6 metres long can use two units to create separate climate zones inside the vehicle.

The Freshjet can easily be retro fitted in replacement of your existing 400 x 400 roof vent (subject to the roof vent location, & roof space for the AC unit), alternatively it can be retro fitted with 400 x 400 roof cut out.

Remote Control Functions: Night-time control, timer, temperature pre-setting (+16°C to +31°C), automatic mode, cooling, lighting on/off. Ideal for motorhomes, the unit can also be operated efficiently on the move with the option of a DC Kit 2 or 3 (12 volts DC)

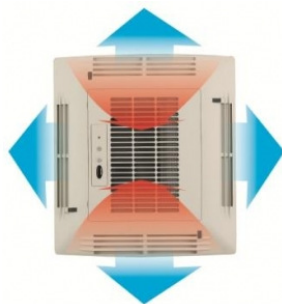
- Compact and lightweight
- Quiet operation
- Additional heating function
- Very low starting current
- All functions can be controlled by remote control
- Integrated LED lights
- Air distribution with four adjustable air streams
- Designed for vehicles lengths of up to 6 m
- As a duo unit, ideal for creating separate climate zones in larger vehicles



### Technical Data

Cooling capacity (kW)	1.7
Capacity (BTU/h)	5800
Power (V/Hz)	230 / 50
Dimensions (L x W x H) (mm)	787 x 562 x 225
Dimensions (roof opening) (mm)	400 x 400
Dimensions (inside box) (mm)	535 x 480 x 47
Weight (kg)	29
Consumption, cooling mode (W)	620

**9102900218 £1499.99**





## Fresh Jet 2200 Compact Roof Air Conditioner

**New** – The FreshJet 2200 is the most light weight and ultra-compact roof air conditioner in Europe for keeping cool on the move. Ideal for caravans due to its significant weight saving, campervans and motorhomes. The outside dimensions make it the smallest motorhome air conditioner available in the market.

Energy-saving and pleasantly quiet. Its compact footprint leaves room on the roof for the satellite dish or roof box and is easy to install. It has a 'soft start' which ensures hassle-free operation even on campsites with low electrical circuit protection. It features new style air diffuser with front, side & rear air distribution, a digital remote control unit for on/off, fan speed, temperature settings, & LED lighting.

The roof air conditioner supplies the interior with cool dehumidified air without dust and dirt. Four dimmable LED lamps integrated in the air outlet unit provide pleasant lighting. The roof air conditioner has an additional heating function.

Owners of motorhomes more than 7 metres long can use two units to create separate climate zones inside the vehicle. The Freshjet can easily be retro fitted in replacement of your existing 400 x 400 roof vent (subject to the roof vent location, & roof space for the AC unit), alternatively it can be retro fitted with 400 x 400 roof cut out.

Remote Control Functions: Night-time control, timer, temperature pre-setting (+16°C to +31°C), automatic mode, cooling, lighting on/off. Ideal for motorhomes, the unit can also be operated efficiently on the move with the option of a DC Kit 2/3 or 4 (12 volts DC)

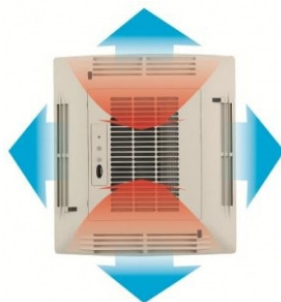
- Compact and lightweight
- Quiet operation
- Additional heating function
- Very low starting current
- All functions can be controlled by remote control
- Integrated LED lights
- Air distribution with four adjustable air streams
- Designed for vehicles lengths of up to 7 m
- As a duo unit, ideal for creating separate climate zones in larger vehicles



### Technical Data

Cooling capacity (kW)	2.2
Capacity (BTU/h)	7500
Power (V/Hz)	230 / 50
Dimensions (L x W x H) (mm)	787 x 562 x 225
Dimensions (roof opening) (mm)	400 x 400
Dimensions (inside box) (mm)	535 x 480 x 47
Weight (kg)	32
Consumption, cooling mode (W)	950

**9102900222    £1609.99**



## Dometic B2600 Air conditioner with efficient heat pump technology

From a technical point of view, the B 2600 offers a special feature as it is the very first Dometic roof air conditioner to be fitted with an energy efficient heat pump system. That means the B 2600 provides extremely powerful cooling and heating in particular, despite using less energy. The innovative Dometic air distribution allows you to direct the flow of air and the amount as and when you need it. All the major features can be controlled using the multi-functional remote control. Scope of delivery: roof air conditioner, remote control, air diffuser unit, mounting frame, fixing materials, installation and operating instructions.

- Heat pump technology
- For 230-volt AC stationary operation
- Control panel with integrated lighting
- Remote control
- Thermostat temperature control

### Technical Data:

Type	Roof
Cooling Capacity (Kw)	2.5
Capacity (BTU/h)	8500
Power (V/Hz)	230 / 50
Dimensions (L x W x D) (mm)	980 x 650 x 235
Dimensions (Roof opening) (mm)	400 x 400
Net weight (Kg)	40.5
Circuit (A/ sec)	18/0.15
Consumption, cooling mode (W)	1200
Consumption, heating mode (W)	1350
Fuse (A)	6 delay fuse
Roof thickness (mm)	30-80

**9102900102 £1809.99**



## Dometic B3200 Power for professional use

Due to its powerful performance this air conditioner is perfect for professionally used vehicles. Enjoy reliable and powerful heating and cooling even in adverse conditions such as frequent air changes. The new interior design helps to save valuable space. Different air outlet positions possible: front and/or back air distribution.

- New space-saving interior design
- Amazing cooling capacity of 3.2 kW
- Highest flexibility with three fan speeds
- Powerful 1.6 kW heating element
- Suitable for all European campsites due to fuse size of 10 ampere
- **Recommended generators:** TEC 29, TEC 30, T 4000

### Technical Data:

Type	Roof
Cooling Capacity (Kw)	3.2
Full load, cooling (A)	6.3
Capacity (BTU/h)	10900
Refrigerant	R407c
Dimensions (L x W x D) (mm)	1025 x 737 x 245
Dimensions (Roof opening) (mm)	355 x 355
Dimensions (Inside box) (mm)	559 x 508 x 64
Net weight (Kg)	45
Circuit (A/ sec)	29/0.15
Consumption, cooling mode (W)	1350
Consumption, heating mode (W)	1600
Fan speed (Kw)	3
Roof thickness (mm)	110

**9108555544**

**£1404.99**

**Requires air diffuser (9106556585) £119.99**



## Dometic FreshLight 2200 Air Conditioner & Rooflight

FreshLight, the innovative new product from Dometic offers the unique combination of a rooflight and a high performance roof air conditioner. Now camping enthusiasts can keep cool and comfortable without sacrificing natural light.

Dometic FreshLight is a patent-pending solution developed in conjunction with Dometic Seitz. As well as incorporating a window to let daylight inside the caravan or motorhome, it has a soft light for evening ambience built in. It creates a comfortable cooling breeze at an efficient 2200 watts in capacity whilst in cooler months, it will provide heat with its powerful 2800-watt heat pump. FreshLight also incorporates an active ventilation system. In addition, Dometic FreshLight features an individually adjustable air diffuser system to filter out dust particles and an automatic blower control that is exceptionally quiet in operation. Other features include a timer and night-time mode as well as a pleated blind for the window. It comes complete with remote control for ease of use. Despite the high-tech functionality, Dometic FreshLight does not compromise on aesthetics. The flat and aerodynamic design will have virtually no effect on the vehicle's road behaviour. Its ability to adjust to any roof thickness between 30 and 70 millimetres ensures a neat installation for all types of vehicles.

The new-generation roof air conditioner was principally designed for stationary use on a 230-volt mains supply, but it can also be fitted for mobile use by adding a matching DC kit. Dometic FreshLight is designed for vehicles up to seven metres long and up to 28 cubic metres in capacity.

- Rooflight with single-pleated blind
- Active ventilation system
- Thermostat temperature control
- Control panel with integrated, dimmable LED lights
- Energy-efficient heat pump system for cooling and heating
- Flat, aerodynamic design
- Perfect installation results, unit adjusts to the roof thickness
- Individual air flow regulation with automatic blower control
- Temperature and blower speed are conveniently set by remote control
- For stationary operation (230 volts AC)
- Optional DC-Kit-or DC-Kit-3 also available for mobile operation on 12 volts DC



### Technical Data

Cooling capacity (kW)	2.2
Capacity (BTU/h)	7500
Power (V/Hz)	230 / 50
Dimensions (LxWxH)	1105 x 758 x 210
Dimensions (roof opening) (mm)	400 x 700
Dimensions (inside box) (mm)	880 x 550 x 53
Weight (kg)	42
Consumption, cooling mode (W)	950
Consumption, heating mode (W)	1200



**9102900165      £1999.00**





**Air Conditioner DC Kits**



**DC-Kit 1 For 12-volt mobile operation**

Inverter (sine-wave-like output voltage, with mains priority circuit), remote control incl. 5 m control cable, 2 battery cables 16 mm<sup>2</sup> (1.5 m long), 230-volt connection cable, charging current distributor with relay.

Dimensions (H x W x D) (mm) (inverter)	77 x 210 x 300
Current Consumption (A)	30-40
Recommended generator capacity	≥75
Recommended tot. battery capacity (Ah)	≥80
Continuous output (w)	1000

**9100300003                      £349.99**

**For CA1000 & Freshjet 1100**

**DC-Kit 2 For 12-volt mobile operation**

Inverter (sine-wave-like output voltage, with mains priority circuit), remote control incl. 5 m control cable, 2 battery cables 25mm<sup>2</sup> (1.5 m long), 230-volt connection cable, charging current distributor with power relay.

Dimensions (H x W x D) (mm) (inverter)	77 x 210 x 410
Current Consumption (A)	100-500
Recommended generator capacity	≥150
Recommended tot. battery capacity (Ah)	≥250
Continuous output (w)	1600

**9100300001                      £529.99**

**For B1600 Plus, B2200, CA-2500, Freshjet 1100, Freshjet 1700 & Freshjet 2200**

**DC-Kit 3 Deluxe kit for 12-volt mobile operation**

Sine wave inverter, remote control incl. 7.5 m control cable, mains priority circuit with 2 power sockets, 2 battery cables 35 mm<sup>2</sup> (1.5 m long), 22 pieces of 230-volt connection cable, charging current distributor with relay.

Dimensions (H x W x D) (mm) (inverter)	88 x 191 x 415
Current Consumption (A)	81-113
Recommended generator capacity	≥120
Recommended tot. battery capacity (Ah)	≥200
Continuous output (w)	1500

**9100300002                      £1059.99**

**For CA1000, B1600 Plus, B2200, CA-2500, HB2500, Freshjet 1100, Freshjet 1700 & Freshjet 2200**

## Terms & Conditions of Trading/Ordering

1. Where cheques are accepted (deposits for building only), Please make all cheques payable to Rainbow Conversions Ltd
2. For all orders that involve building and /or fitting, a 30% deposit is required before work commences
3. All orders for parts or accessories must be paid for in full, prior to goods being dispatched or upon collection
4. All “special orders” must be paid for in full prior to goods being ordered from our suppliers. “Special” means goods not normally stocked or supplied by Rainbow Conversions Ltd.
5. All mail order goods are subject to our post and packaging charges.
6. All goods returned are subject to a 15% handling charge.
7. All goods remain the property of Rainbow Conversions Ltd until paid for in full.
8. All goods are subject to availability of stock.
9. All prices shown include VAT @20% unless otherwise stated.
10. Although we always attempt to meet quoted deadlines, we are unable to guarantee delivery/collection dates due to operational constraints.
11. Any building and/or fitting orders which are cancelled by the customer after work has commenced, but has not been completed will result in the automatic loss of the 30% deposit. Any costs incurred to Rainbow Conversions Ltd above the 30% deposit must also be paid. Any order which is cancelled before work has commenced a refund may be given at our discretion. Excluding any special order parts.
11. Every effort has been taken to ensure the accuracy of the contents of our brochure. However, the company cannot be held responsible for any errors that may occur.
12. Due to a constant effort to improve our range of products and our prices, we reserve the right to alter specifications and prices without notice.
13. Upon placing an order, you are agreeing to these terms and conditions.
14. All Mail Order parcels must be checked for damages before signing for them. If Damage occurs please mark ‘DAMAGED’ on the carriers consignment note before accepting the goods.
15. Failure to do this voids insurance claims against the carriers and we (Rainbow conversions ltd) will not be held responsible for damage to goods whilst in transit.
16. All damage, shortages or omissions must be reported to us within 3 working days.
17. E&O.E.
18. These terms and conditions and details in our brochure are subject to change without prior notice.
19. These terms and conditions do not affect your statutory rights.

## How to find us

There is a link to a map on our website  
[www.rainbowconversions.co.uk](http://www.rainbowconversions.co.uk)

### Rainbow Conversions Ltd

Unit 1, Algores Way  
WISBECH  
Cambs. PE13 2TQ

Tel : 01945 585931

